

Fourth Sunday of Easter

Ps 32: 5, 6 and 1

Introit
IV

M



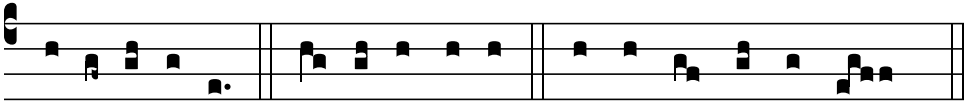
I-se-ri-córdi- a * Dómi-ni ple-na est terra, al-le-



lú- ia: verbo De- i cæ- li firmá- ti sunt, al-le- lú- ia,



al-le- lú- ia. *Ps.* Ex-sultá- te ju- sti in Dómi- no : * re-ctos de- cet



collaudá- ti- o. Gló- ri- a Pa- tri. E u o u a e.