



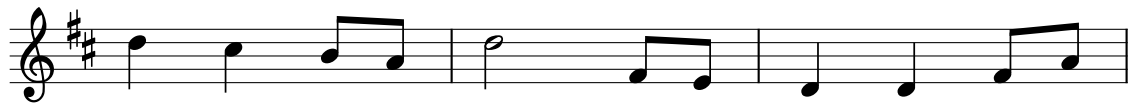
Ant. Lord have mer - cy, *mis - e - re - re*, Lord have mer - cy on my
Dox. Glo - ry be to God the Fa - ther, Glo - ry be to God the



soul. For I call out all the day long: Lord, your mer - cy I ex -
Son, Glo - ry be to God the Spi - rit, Glo - ry to the Three in



tol. You are good, Lord, and for - giv - ing, full of
One. From the heart of bless - ed Ma - ry, from all



love to all who cry; Now in - cline your ear and
saints the song as - cends, and the church the strain re -



hear me, poor and need - y, Lord, am I.
ech - oes un - to earth's re - mo - test ends.

Antiphon: Psalm 86:3,5,1, Miserere mihi Domine; Introit, Ordinary 22 adapted Greg Heislman, © 2013.
Tune: NETTLETON, 8 7 8 7 D; Wyeth's Repository of Sacred Music II, 1813.