

Corpus Christi

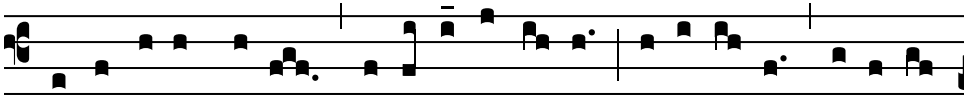
Ps 80: 17 and 2, 3, 11

Introit
II

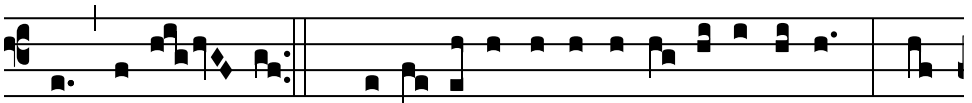
C



I-bá- vit e- os * ex á-di-pe frumén-ti, al-le-lú- ia :



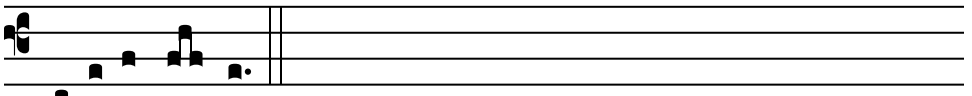
et de petra, melle sa-tu-rá-vit e- os, al-le-lú- ia, al-le-lú-



ia, al-le-lú- ia. *Ps.* Exsul-tá-te De-o ad-ju- tó-ri nostro : * iu-



bi-lá-te De-o Ia-cob. Glóri- a Patri. E u o u a e.



Cibávit e- os * *simple incipit*