

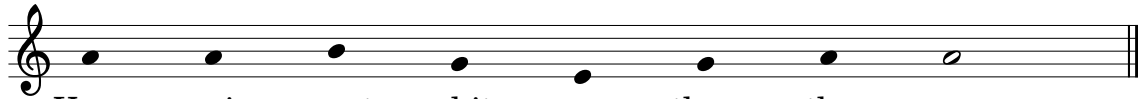
1. O Light of Light, love giv - en birth;
Introit. My heart de - clared to you, O God:



Je - sus, Re - deem - er of the earth:
Your lov - ing count - en - ance I've sought;



More bright than day your face did show, _____
I shall your count - en - ance em - brace, _____



Your rai - ment whit - er than the snow.
Lord, do not turn from me your face.

*Text: Latin, 10th century, "O Nata Lux de Lumine"; trans Lawrence Housman (1865-1959)
Psalm 27:8, 9, 1; Tibi dixit cor meum; Introit, Lent 2; adapted Greg Heislman, © 2015, 2020.
Tune: LM JESU DULCIS MEMORIA*