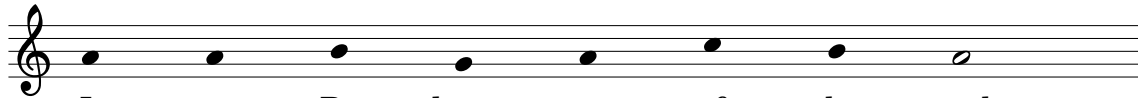




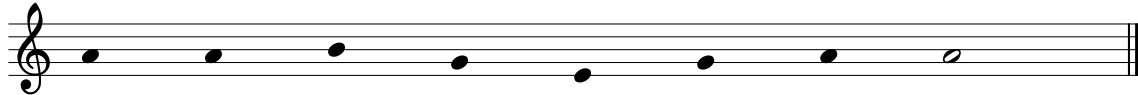
1. O Light of Light, love giv - en birth;
 2. Two pro - phets who had faith to see,
Introit. My heart de - clared to you, O God:



Je - sus, Re - deem - er of the earth:
 With your e - lect found com - pan - y;
 Your lov - ing count - en - ance I've sought;



More bright than day your face did show, _____
 The heav'ns a - bove your glo - ry named, _____
 I shall your count - en - ance em - brace, _____



Your rai - ment whit - er than the snow.
 Your Fa - ther's voice his Son pro - claimed.
 Lord, do not turn from me your face.

*Text: Latin, 10th century, "O Nata Lux de Lumine"; trans Lawrence Housman (1865-1959)
 Psalm 27:8, 9, 1; Tibi dixit cor meum; Introit, Lent 2; adapted Greg Heislman, © 2015, 2020.
 Tune: LM JESU DULCIS MEMORIA*