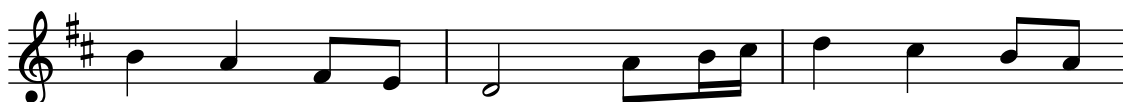




1. Come Thou Fount of ev' - ry bless - ing Tune my  
*Introit.* Turn your ear, O Lord, give an - swer; Save the



heart to sing Thy grace; Streams of mer - cy, nev - er ceas - ing, Call for  
one who trusts in you. Mer - cy, Lord, I cry in ear - nest; All day



songs of loud - est praise. Teach me some mel - o - dious  
long I yearn for you. Cheer the spi - rit of your



son - net, Sung by flam - ing tongues a - bove. Praise the  
ser - vant, For to you I lift my soul. Off - 'ring



mount! Oh, fix me on it, Mount of God's un - chang - ing love.  
prayer and praise most fer - vent, Your kind mer - cy I ex - tol.

*Text by Robert Robinson 1758. Psalm 130:3, 4 Si iniquitates; Introit, Ordinary Time 28; adapted Greg Heislman, © 2014.  
Tune: NETTLETON, 8 7 8 7 D; Wyeth's Repository of Sacred Music, 1813*